



PRIME

# **PRE-SEMESTER BULLETIN**

December 2020

**REGION IV - CALABARZON**

# Common pests and rice varieties planted in the region

TABLE 1. Commonly observed pests in the region for the 1st semesters of 2019 and 2020.



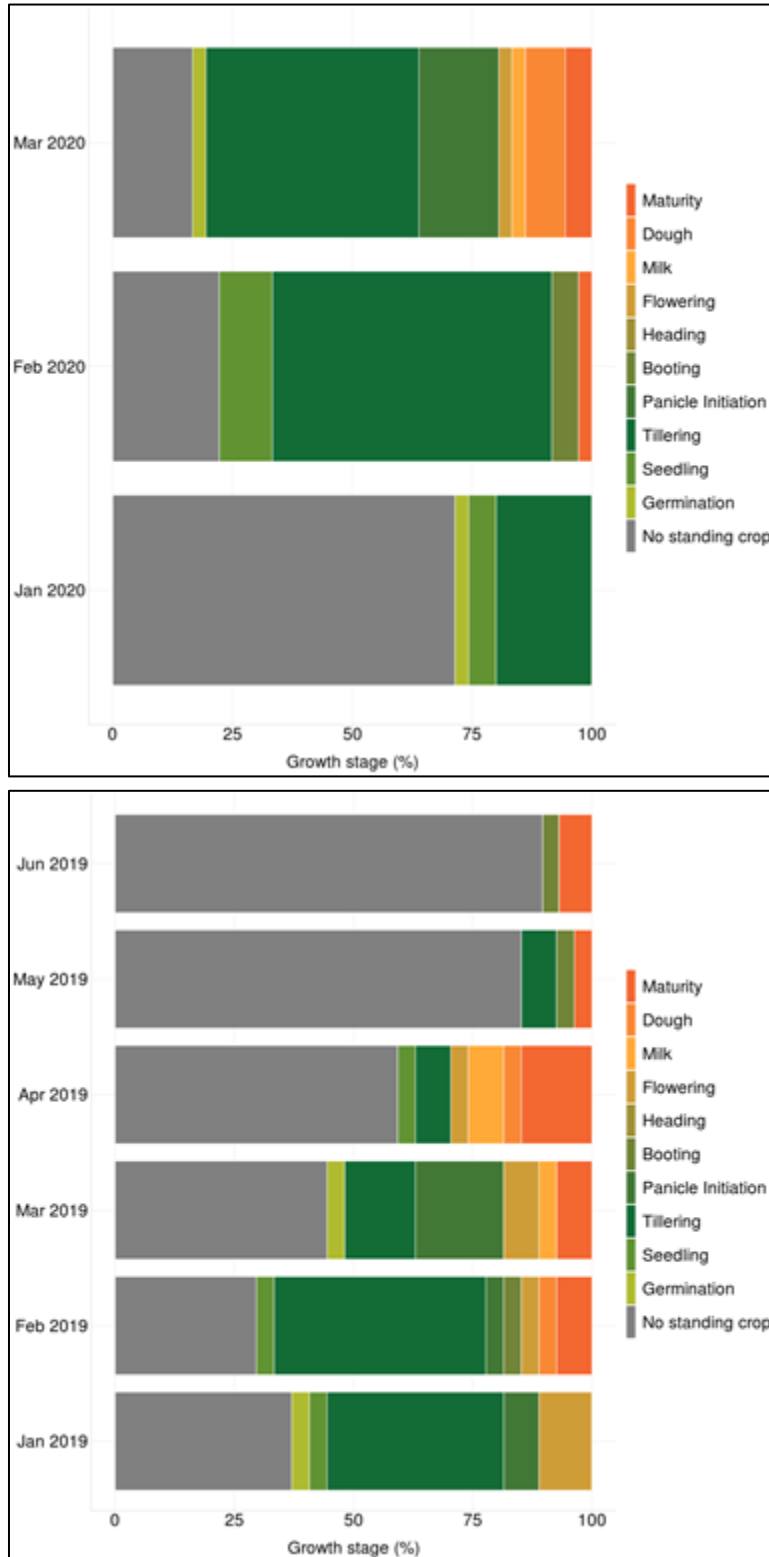
TABLE 2. Commonly planted varieties in the region for the 1st semesters of 2019 and 2020.



Disclaimer: All the data presented in this report are based on the monthly monitoring of farmers' fields by regional data collectors of PRIME.

# Growth stages

FIGURE 1. Percentage of crop growth stage of fields by month.



Disclaimer: All the data presented in this report are based on the monthly monitoring of farmers' fields by regional data collectors of PRIME.

# Monitored fields and data collectors

## Municipalities surveyed

**Batangas** : San Juan  
**Laguna** : Santa Maria, and Santa Cruz  
**Quezon** : Sariaya, and Infanta

## Monitoring date

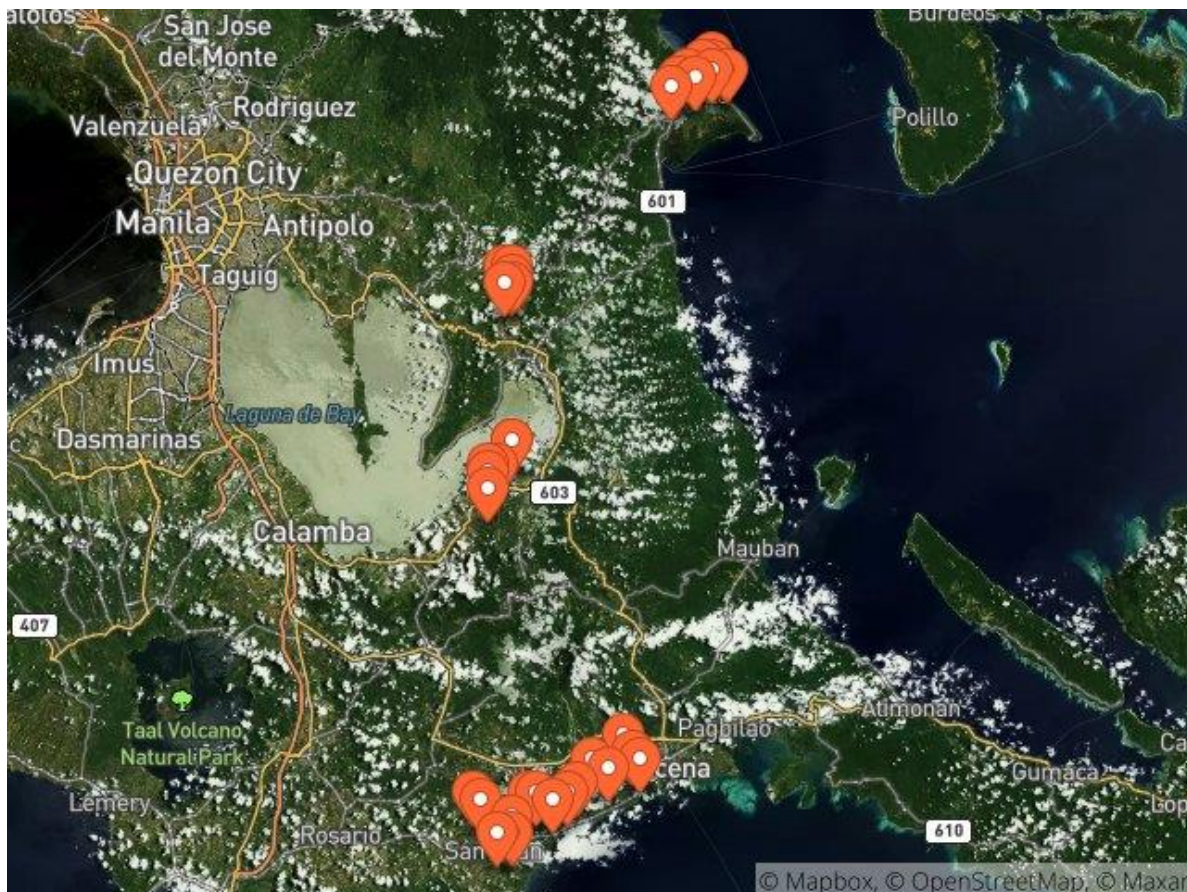
January 2020 - June 2020

## Number of monitoring fields

36

## Data collectors

Aries Labonera, Marianito Jr. Mendoza, and Rojohn Velasco



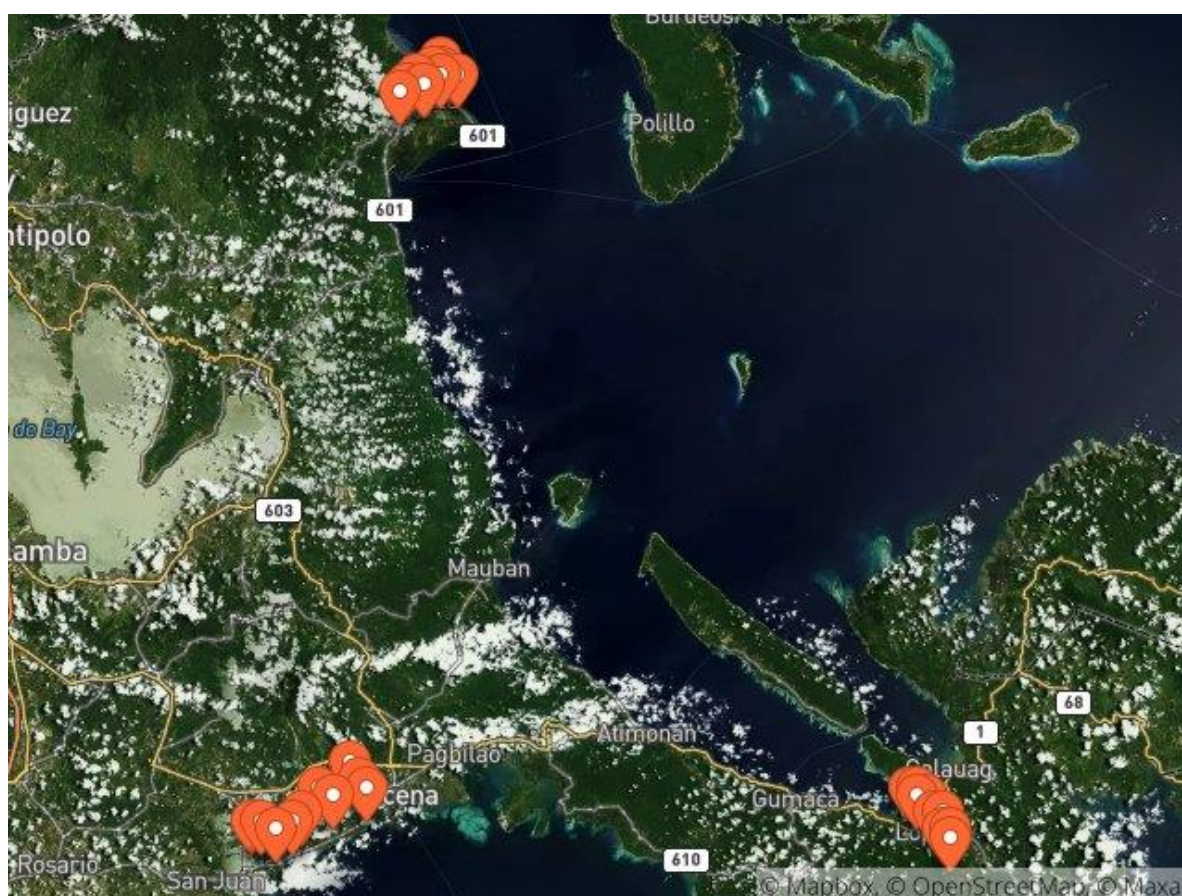
**FIGURE 2. Monitored barangays in CALABARZON from January 2020 to June 2020. Each barangay is represented by 1 marker.**

Disclaimer: All the data presented in this report are based on the monthly monitoring of farmers' fields by regional data collectors of PRIME.





<b>Municipalities surveyed</b>	<b>Quezon:</b> Sariaya, Lopez, and Infanta
<b>Monitoring date</b>	January 2019 - June 2019
<b>Number of monitoring fields</b>	30
<b>Data collectors</b>	Aries Labonera, Krizzia Ivy Sumilang, Marianito Jr. Mendoza, and Rojohn Velasco



**FIGURE 3. Monitored barangays in CALABARZON from January 2019 to June 2019. Each barangay is represented by 1 marker.**

Disclaimer: All the data presented in this report are based on the monthly monitoring of farmers' fields by regional data collectors of PRIME.

# At a glance

**Table 3. Mean incidence of pest injuries, count of insect pests, and percentage of weed cover by month from January to June 2020.**

CALABARZON	2020					
	JAN	FEB	MAR	APR	MAY	JUN
<b>A. FOLIAR DISEASES</b>						
Bacterial leaf blight	0.0	0.0	0.1	0	0	0
Bacterial leaf streak	0.0	0.0	0.0	0	0	0
Brown spot	0.0	0.0	0.3	0	0	0
Leaf blast	0.0	0.0	0.0	0	0	0
Red stripe	0.0	0.0	0.0	0	0	0
<b>B. DISEASE OR PEST INJURY ON TILLERS</b>						
Deadheart	0.0	0.1	0.1	0	0	0
Sheath blight	0.0	0.1	0.3	0	0	0
<b>C. DISEASE OR PEST INJURY ON PANICLES</b>						
Neck blast	0	0.0	0.0	0	0	0
Whitehead	0	6.2	4.1	0	0	0
<b>D. SYSTEMIC DISEASE OR PEST INJURY</b>						
Bugburn	0.0	0.0	0.0	0	0	0
Hopperburn	0.0	0.0	0.0	0	0	0
Tungro	0.2	0.0	0.0	0	0	0
<b>E. INSECT COUNT</b>						
Brown planthopper	0.0	0.0	0.0	0	0	0
Green leafhopper	0.0	0.0	0.0	0	0	0
Rice black bug	0.0	0.0	0.0	0	0	0
Rice bug	0.0	0.0	0.0	0	0	0
Rice grain bug	0.0	0.0	0.0	0	0	0
<b>F. RAT INJURY</b>						
	0.0	0.0	0.0	0	0	0
<b>G. WEED COVER</b>						
	1.3	3.3	7.3	0	0	0

Mean of all monitoring fields.

LEGEND

1-5 % or 1-5 insects

>5 % or >5 insects

Disclaimer: All the data presented in this report are based on the monthly monitoring of farmers' fields by regional data collectors of PRIME.

**Table 4. Mean incidence of pest injuries, count of insect pests, and percentage of weed cover by month from January to June 2019.**

CALABARZON	2019					
	JAN	FEB	MAR	APR	MAY	JUN
<b>A. FOLIAR DISEASES</b>						
Bacterial leaf blight	0.0	0.1	0.0	0.0	0.0	0.0
Bacterial leaf streak	0.1	0.0	0.0	0.0	0.0	0.0
Brown spot	0.6	3.7	2.9	0.2	0.9	0.6
Leaf blast	0.2	0.0	0.0	0.0	0.0	0.0
Red stripe	0.0	0.0	0.0	0.0	0.0	0.2
<b>B. DISEASE OR PEST INJURY ON TILLERS</b>						
Deadheart	0.4	0.1	2.0	0.0	0.0	0.5
Sheath blight	0.3	0.5	1.8	4.4	0.5	0.5
<b>C. DISEASE OR PEST INJURY ON PANICLES</b>						
Neck blast	0.3	0.0	0.0	0.0	0.0	0.0
Whitehead	0.7	1.8	1.5	2.9	16.9	0.0
<b>D. SYSTEMIC DISEASE OR PEST INJURY</b>						
Bugburn	0.0	0.0	0.0	0.0	0.0	0.0
Hopperburn	0.0	0.0	0.0	0.0	0.0	0.0
Tungro	0.0	0.0	0.0	0.0	0.0	0.0
<b>E. INSECT COUNT</b>						
Brown planthopper	0.0	0.0	0.0	0.0	0.0	0.0
Green leafhopper	0.0	0.3	0.1	0.1	0.1	0.0
Rice black bug	0.0	0.0	0.0	0.0	0.0	0.0
Rice bug	0.0	0.0	0.2	0.5	0.9	0.7
Rice grain bug	0.0	0.0	0.0	0.0	0.1	0.0
<b>F. RAT INJURY</b>	0.0	0.1	0.4	0.0	0.3	0.0
<b>G. WEED COVER</b>	2.4	9.3	6.8	4.9	23.3	30.6

Mean of all monitoring fields.

LEGEND

1-5 % or 1-5 insects

>5 % or >5 insects

Disclaimer: All the data presented in this report are based on the monthly monitoring of farmers' fields by regional data collectors of PRIME.




# Management of major pests

This section describes the management of the most important pests during the reporting period. A pest is operationally considered important if the mean incidence in at least one month was 5% or higher.

## Brown spot


1. The most practical and economical approach to manage brown spot is to grow a resistant variety
2. When feasible, improve soil fertility by regularly monitoring nutrients in the soil and the application of required fertilizers.
3. If possible, investigate the occurrence of Akiochi, a nutritional disorder which is caused by excessive concentration of hydrogen sulfide in the soil and results in reduced nutrient uptake in some surveyed fields. Brown spot develops on plants affected by Akiochi and has, in fact, been used as its indicator. It occurs in irrigated fields that are poorly drained and have excessive organic matter. Low decomposition of stubbles, which usually occurs in areas with short fallow period, results in high organic matter.
4. Use certified seeds or clean seeds to prevent infected seeds. Brown spot is a seedborne disease, which means that growing an infected seed will result in diseased plants during the cropping season. Clean seeds can be cleaned manually using flotation method which consists of the following steps:
  - a. Dissolve 1.5 kg salt in 40 liters of water.
  - b. Soak seeds in the salt solution.
  - c. Stir to float diseased, unfilled and broken seeds.
  - d. Remove floating seeds by hand or with a sieve.
  - e. Wash seeds 3 to 4 times with clean water.
  - f. Dry in the shade thoroughly before sowing.
5. Use optimum seeding rate (80 kg per hectare) for direct-seeded rice and optimum plant spacing (e.g., 20 cm x 20 cm) for transplanted rice. A dense plant canopy reduces sunlight penetration, increases leaf wetness duration and lowers temperature in the plant canopy, creating a favorable microclimate for disease development.



- 
6. Apply potassium and other required nutrients in addition to nitrogen. Potassium reduces the amount of most rice diseases.
  7. Apply calcium silicate fertilizer or silicon fertilizer if this is available in the area.
  8. Apply fungicides, such as iprodione, propiconazole, azoxystrobin, trifloxystrobin, and carbendazim. Seeds may also be treated with fungicides. Use fungicides as a last resort in controlling the disease. Pathogens become resistant to chemical pesticides if these are not used properly. Avoid repetitive use of a single active ingredient and mix or alternate an active ingredient with an appropriate partner. Integrate the use of chemical pesticides with cultural practices or non-chemical methods. Wherever feasible, several strategies should be used together.
  9. If possible, irrigate the field continuously until one week before harvest. Do not drain the field for long periods because drought stress favors brown spot
  10. If harvested plants had severe disease, immediately plow or rotavate the field after harvest to incorporate infected stubbles and crop residues in the soil.
  11. Dry grains immediately after harvest to moisture content of at least 14%.
  12. Store grains in sealed containers with moisture content of at least 14%.


## **Sheath blight**

1. There is currently no variety with reliable resistance to sheath blight. Varieties are either moderately or highly susceptible.
2. Use optimum plant spacing (e.g., 20 cm x 20 cm) for transplanted rice. A dense plant canopy creates a favorable microclimate for disease development (reduced sunlight penetration, longer leaf wetness duration and cooler temperature).
3. Manage the application of nutrient fertilizer. Apply only the recommended amount of nitrogen. Excessive amount of nitrogen favors the development of sheath blight. Nitrogen makes the plant tissues softer and creates a dense canopy that results in favorable microclimate for disease development.
4. Apply the required amount of nitrogen in splits instead of applying all the required amount at the start of the cropping season.
5. Apply potassium and other required nutrients in addition to nitrogen. Potassium reduces the amount of most rice diseases.

- 
6. Apply calcium silicate fertilizer or silicon fertilizer when feasible.
  7. Apply *Trichoderma* spp. to control sheath blight. The application of *Trichoderma* may also increase plant vigor. Purchase a product that has been formulated and maintained according to strict quality control measures. Follow the directions on how to use and store the product as recommended by the manufacturer to maintain its viability.
  8. Keep the field free from weeds because the pathogen can infect most of the weed species in rice fields.
  9. Use fungicides as last resort in controlling the disease. If necessary, apply fungicides, such as azoxystrobin or ready mixture of difenoconazole and propiconazole at 7 days after panicle differentiation to heading.
  10. Avoid repetitive use of a single active ingredient and mix or alternate an active ingredient with an appropriate partner. Integrate the use of chemical pesticides with cultural practices or non-chemical methods. Wherever feasible, several strategies should be used together.
  11. If plants had severe disease, cut the stubbles close to the ground and remove them from the field. A less laborious option is to immediately plow or rotavate the field after harvest to incorporate infected stubbles and crop residues in the soil.
  12. Avoid ratooning because the pathogen can survive on ratoon.
  13. Keep the field dry during fallow period. Drying may reduce the survival of the pathogen but may not completely control the disease because it can survive on dead plant tissues.

### **Deadheart and whitehead caused by stemborer**

1. Know the peak of yellow stem borer population in the area. This can be done using light traps. Do not transplant or sow seeds when insect population is high.
2. Consider the use of pheromones to control stemborers.
3. The most practical and economical approach to manage whitehead is to grow a resistant variety. Rotate varieties with different levels of resistance because a resistant variety may later become susceptible if grown continuously across several cropping seasons.
4. Practice planting synchrony with defined fallow period in your area. Asynchronous planting results in overlapping generations of stemborer




throughout the year. If this is not possible, a farmer who intends to grow a susceptible variety should not establish his crop later than most farmers' fields.

5. Raise level of irrigation water periodically to submerge the eggs on the lower parts of the plant.
6. Manage the application of nutrient fertilizers. Apply the required amount of nitrogen in splits instead of applying all the required amount at the start of the cropping season. Nitrogen makes the plant tissues softer and facilitates penetration of stemborer larvae.
7. Remove alternate hosts during the cropping season and fallow period.
8. If high infestation occurred, cut stubbles close to the ground and dry or remove stubbles from the field. A less laborious option is to plow the field during fallow to bury stubbles.
9. Do not apply insecticides during the early vegetative stage. Systemic insecticides may be applied after the vegetative stage. Systemic insecticides were found to be more effective than contact insecticides because the larvae and pupae are inside the stem. Insecticides should be used with extreme caution. Monitor the population of stemborers and intensity of deadheart or whitehead prior to the application of insecticides because its efficacy is low when generations of stemborer overlap and when damage is already severe. Insecticides should be used as the last resort and should be integrated with other methods to conserve natural enemies.

## Weeds

1. Plow and harrow the field several times before crop establishment. If feasible, start land preparation 3-4 weeks before planting.
2. If weedy rice is a problem, apply glyphosate before land preparation or seeding. The application of pretilachlor with fenchlorim during final land preparation or levelling has also been reported to reduce weedy rice.
3. Practice stale seedbed technique. According to the IRRI Knowledge Bank (<http://www.knowledgebank.irri.org/step-by-step-production/growth/weed-management/stale-seedbed-technique>), this technique is done as follows:
  - a. Perform tillage operations. Plow, harrow, and level the field.

- 
- b. Stimulate weed emergence by light irrigation.
  - c. Irrigate the field at least two weeks before sowing.
  - d. Maintain enough soil moisture to allow weeds to germinate.
  - e. Kill the emerged seedlings using non-selective herbicides (e.g., glyphosate) or light cultivation.
  - f. If the soil condition is suitable for sowing, broadcast seeds without further tillage operations. Tillage could bring more weed seeds near the soil surface, thus promoting weed germination.
4. Level the field to ensure a constant water level that controls weeds. Avoid high spots where weeds can grow.
  5. Apply pre-emergence herbicide (e.g., pretilachlor + fenclorim 2-3 days after sowing). Follow recommended amount and timing of product and water condition in the field as indicated in the label. Do not use the same herbicide over long periods to prevent herbicide resistance.
  6. If grass weeds are the main weed problem, apply early post-emergence herbicide.
  7. Maintain a 2-5 cm water level in the field to minimize weed emergence. If water is sufficient, flood the fields until closure of the plant canopy.
  8. Apply nitrogen fertilizer just after weeding to minimize rice-weed competition for nitrogen.
  9. If feasible, consider the use of biological control agents to suppress growth or reduce population of weeds.
  10. If feasible, plow the field during fallow to kill weeds and prevent the build-up of weed seeds in the soil.

# Annexes

## Annex 1. Incidence of diseases or pest injuries during the previous 1st semesters.

CALABARZON		2019						2020					
Batangas		JAN	FEB	MAR	APR	MAY	JUN	JAN	FEB	MAR	APR	MAY	JUN
<b>A. FOLIAR DISEASES</b>													
Bacterial leaf blight	mean	0.0	0.0	0.0	0.0	0.0	0.0	0.0	0.0	0.0	0.0	0.0	0.0
	median	0.0	0.0	0.0	0.0	0.0	0.0	0.0	0.0	0.0	0.0	0.0	0.0
	maximum	0.0	0.0	0.0	0.0	0.0	0.0	0.0	0.0	0.0	0.0	0.0	0.0
	no. of fields	0	0	0	0	0	0	2	2	2	0	0	0
Bacterial leaf streak	mean	0.0	0.0	0.0	0.0	0.0	0.0	0.0	0.0	0.0	0.0	0.0	0.0
	median	0.0	0.0	0.0	0.0	0.0	0.0	0.0	0.0	0.0	0.0	0.0	0.0
	maximum	0.0	0.0	0.0	0.0	0.0	0.0	0.0	0.0	0.0	0.0	0.0	0.0
	no. of fields	0	0	0	0	0	0	2	2	2	0	0	0
Brown spot	mean	0.0	0.0	0.0	0.0	0.0	0.0	0.0	0.0	0.9	0.0	0.0	0.0
	median	0.0	0.0	0.0	0.0	0.0	0.0	0.0	0.0	0.9	0.0	0.0	0.0
	maximum	0.0	0.0	0.0	0.0	0.0	0.0	0.0	0.0	1.8	0.0	0.0	0.0
	no. of fields	0	0	0	0	0	0	2	2	2	0	0	0
Leaf blast	mean	0.0	0.0	0.0	0.0	0.0	0.0	0.0	0.0	0.0	0.0	0.0	0.0
	median	0.0	0.0	0.0	0.0	0.0	0.0	0.0	0.0	0.0	0.0	0.0	0.0
	maximum	0.0	0.0	0.0	0.0	0.0	0.0	0.0	0.0	0.0	0.0	0.0	0.0
	no. of fields	0	0	0	0	0	0	2	2	2	0	0	0
Red stripe	mean	0.0	0.0	0.0	0.0	0.0	0.0	0.0	0.0	0.1	0.0	0.0	0.0
	median	0.0	0.0	0.0	0.0	0.0	0.0	0.0	0.0	0.1	0.0	0.0	0.0
	maximum	0.0	0.0	0.0	0.0	0.0	0.0	0.0	0.0	0.2	0.0	0.0	0.0
	no. of fields	0	0	0	0	0	0	2	2	2	0	0	0
<b>B. DISEASE OR PEST INJURY ON TILLERS</b>													
Deadheart	mean	0.0	0.0	0.0	0.0	0.0	0.0	0.0	0.5	0.0	0.0	0.0	0.0
	median	0.0	0.0	0.0	0.0	0.0	0.0	0.0	0.5	0.0	0.0	0.0	0.0
	maximum	0.0	0.0	0.0	0.0	0.0	0.0	0.0	1.0	0.0	0.0	0.0	0.0
	no. of fields	0	0	0	0	0	0	2	2	2	0	0	0
Sheath blight	mean	0.0	0.0	0.0	0.0	0.0	0.0	0.0	0.4	0.0	0.0	0.0	0.0
	median	0.0	0.0	0.0	0.0	0.0	0.0	0.0	0.4	0.0	0.0	0.0	0.0
	maximum	0.0	0.0	0.0	0.0	0.0	0.0	0.0	0.7	0.0	0.0	0.0	0.0
	no. of fields	0	0	0	0	0	0	2	2	2	0	0	0
<b>LEGEND</b>													
<b>Blue font</b>	5 to 10 % incidence of diseases, insect pest injuries or weed cover or 5 to 10 insects.												
<b>Red font</b>	> 10 % incidence of diseases, insect pest injuries or weed cover or > 10 insects.												

Disclaimer: All the data presented in this report are based on the monthly monitoring of farmers' fields by regional data collectors of PRIME.



## Annex 2. Incidence of diseases or pest injuries during the previous 1st semesters.

CALABARZON		2019						2020					
Batangas		JAN	FEB	MAR	APR	MAY	JUN	JAN	FEB	MAR	APR	MAY	JUN
<b>C. DISEASE OR PEST INJURY ON PANICLES</b>													
Neck blast	mean	0.0	0.0	0.0	0.0	0.0	0.0	0.0	0.0	0.0	0.0	0.0	0.0
	median	0.0	0.0	0.0	0.0	0.0	0.0	0.0	0.0	0.0	0.0	0.0	0.0
	maximum	0.0	0.0	0.0	0.0	0.0	0.0	0.0	0.0	0.0	0.0	0.0	0.0
	no. of fields	0	0	0	0	0	0	0	0	2	0	0	0
Whitehead	mean	0.0	0.0	0.0	0.0	0.0	0.0	0.0	0.0	5.2	0.0	0.0	0.0
	median	0.0	0.0	0.0	0.0	0.0	0.0	0.0	0.0	5.2	0.0	0.0	0.0
	maximum	0.0	0.0	0.0	0.0	0.0	0.0	0.0	0.0	10.3	0.0	0.0	0.0
	no. of fields	0	0	0	0	0	0	0	0	2	0	0	0
<b>D. SYSTEMIC DISEASE OR PEST INJURY</b>													
Bugburn	mean	0.0	0.0	0.0	0.0	0.0	0.0	0.0	0.0	0.0	0.0	0.0	0.0
	median	0.0	0.0	0.0	0.0	0.0	0.0	0.0	0.0	0.0	0.0	0.0	0.0
	maximum	0.0	0.0	0.0	0.0	0.0	0.0	0.0	0.0	0.0	0.0	0.0	0.0
	no. of fields	0	0	0	0	0	0	2	2	2	0	0	0
Hopperburn	mean	0.0	0.0	0.0	0.0	0.0	0.0	0.0	0.0	0.0	0.0	0.0	0.0
	median	0.0	0.0	0.0	0.0	0.0	0.0	0.0	0.0	0.0	0.0	0.0	0.0
	maximum	0.0	0.0	0.0	0.0	0.0	0.0	0.0	0.0	0.0	0.0	0.0	0.0
	no. of fields	0	0	0	0	0	0	2	2	2	0	0	0
Tungro	mean	0.0	0.0	0.0	0.0	0.0	0.0	0.0	0.0	0.0	0.0	0.0	0.0
	median	0.0	0.0	0.0	0.0	0.0	0.0	0.0	0.0	0.0	0.0	0.0	0.0
	maximum	0.0	0.0	0.0	0.0	0.0	0.0	0.0	0.0	0.0	0.0	0.0	0.0
	no. of fields	0	0	0	0	0	0	2	2	2	0	0	0
<b>LEGEND</b>													
<b>Blue font</b>	5 to 10 % incidence of diseases, insect pest injuries or weed cover or 5 to 10 insects.												
<b>Red font</b>	> 10 % incidence of diseases, insect pest injuries or weed cover or > 10 insects.												

Disclaimer: All the data presented in this report are based on the monthly monitoring of farmers' fields by regional data collectors of PRIME.

### Annex 3. Incidence of pest injuries, count of insect pests, and percentage of weed cover during the previous 1st semesters.

CALABARZON		2019						2020					
Batangas		JAN	FEB	MAR	APR	MAY	JUN	JAN	FEB	MAR	APR	MAY	JUN
<b>E. INSECT COUNT</b>													
Brown planthopper	mean	0.0	0.0	0.0	0.0	0.0	0.0	0.0	0.0	0.0	0.0	0.0	0.0
	median	0.0	0.0	0.0	0.0	0.0	0.0	0.0	0.0	0.0	0.0	0.0	0.0
	maximum	0.0	0.0	0.0	0.0	0.0	0.0	0.0	0.0	0.0	0.0	0.0	0.0
	no. of fields	0	0	0	0	0	0	2	2	2	0	0	0
Green leafhopper	mean	0.0	0.0	0.0	0.0	0.0	0.0	0.0	0.0	0.0	0.0	0.0	0.0
	median	0.0	0.0	0.0	0.0	0.0	0.0	0.0	0.0	0.0	0.0	0.0	0.0
	maximum	0.0	0.0	0.0	0.0	0.0	0.0	0.0	0.0	0.0	0.0	0.0	0.0
	no. of fields	0	0	0	0	0	0	2	2	2	0	0	0
Rice black bug	mean	0.0	0.0	0.0	0.0	0.0	0.0	0.0	0.0	0.0	0.0	0.0	0.0
	median	0.0	0.0	0.0	0.0	0.0	0.0	0.0	0.0	0.0	0.0	0.0	0.0
	maximum	0.0	0.0	0.0	0.0	0.0	0.0	0.0	0.0	0.0	0.0	0.0	0.0
	no. of fields	0	0	0	0	0	0	2	2	2	0	0	0
Rice bug	mean	0.0	0.0	0.0	0.0	0.0	0.0	0.0	0.0	0.2	0.0	0.0	0.0
	median	0.0	0.0	0.0	0.0	0.0	0.0	0.0	0.0	0.2	0.0	0.0	0.0
	maximum	0.0	0.0	0.0	0.0	0.0	0.0	0.0	0.0	0.3	0.0	0.0	0.0
	no. of fields	0	0	0	0	0	0	2	2	2	0	0	0
Rice grain bug	mean	0.0	0.0	0.0	0.0	0.0	0.0	0.0	0.0	0.0	0.0	0.0	0.0
	median	0.0	0.0	0.0	0.0	0.0	0.0	0.0	0.0	0.0	0.0	0.0	0.0
	maximum	0.0	0.0	0.0	0.0	0.0	0.0	0.0	0.0	0.0	0.0	0.0	0.0
	no. of fields	0	0	0	0	0	0	2	2	2	0	0	0
<b>F. RAT INJURY</b>	mean	0.0	0.0	0.0	0.0	0.0	0.0	0.0	0.0	0.0	0.0	0.0	0.0
	median	0.0	0.0	0.0	0.0	0.0	0.0	0.0	0.0	0.0	0.0	0.0	0.0
	maximum	0.0	0.0	0.0	0.0	0.0	0.0	0.0	0.0	0.0	0.0	0.0	0.0
	no. of fields	0	0	0	0	0	0	2	2	2	0	0	0
<b>G. WEED COVER</b>	mean	0.0	0.0	0.0	0.0	0.0	0.0	0.0	0.8	8.3	0.0	0.0	0.0
	median	0.0	0.0	0.0	0.0	0.0	0.0	0.0	0.8	8.3	0.0	0.0	0.0
	maximum	0.0	0.0	0.0	0.0	0.0	0.0	0.0	1.7	15.0	0.0	0.0	0.0
	no. of fields	0	0	0	0	0	0	2	2	2	0	0	0
<b>LEGEND</b>													
<b>Blue font</b>	5 to 10 % incidence of diseases, insect pest injuries or weed cover or 5 to 10 insects.												
<b>Red font</b>	> 10 % incidence of diseases, insect pest injuries or weed cover or > 10 insects.												

Disclaimer: All the data presented in this report are based on the monthly monitoring of farmers' fields by regional data collectors of PRIME.

## Annex 4. Incidence of diseases or pest injuries during the previous 1st semesters.

CALABARZON		2019						2020					
Laguna		JAN	FEB	MAR	APR	MAY	JUN	JAN	FEB	MAR	APR	MAY	JUN
<b>A. FOLIAR DISEASES</b>													
Bacterial leaf blight	mean	0.0	0.0	0.0	0.0	0.0	0.0	0.0	0.0	0.2	0.0	0.0	0.0
	median	0.0	0.0	0.0	0.0	0.0	0.0	0.0	0.0	0.0	0.0	0.0	0.0
	maximum	0.0	0.0	0.0	0.0	0.0	0.0	0.0	0.0	1.3	0.0	0.0	0.0
	no. of fields	0	0	0	0	0	0	3	9	11	0	0	0
Bacterial leaf streak	mean	0.0	0.0	0.0	0.0	0.0	0.0	0.0	0.0	0.0	0.0	0.0	0.0
	median	0.0	0.0	0.0	0.0	0.0	0.0	0.0	0.0	0.0	0.0	0.0	0.0
	maximum	0.0	0.0	0.0	0.0	0.0	0.0	0.0	0.0	0.0	0.0	0.0	0.0
	no. of fields	0	0	0	0	0	0	3	9	11	0	0	0
Brown spot	mean	0.0	0.0	0.0	0.0	0.0	0.0	0.0	0.0	0.0	0.0	0.0	0.0
	median	0.0	0.0	0.0	0.0	0.0	0.0	0.0	0.0	0.0	0.0	0.0	0.0
	maximum	0.0	0.0	0.0	0.0	0.0	0.0	0.0	0.0	0.0	0.0	0.0	0.0
	no. of fields	0	0	0	0	0	0	3	9	11	0	0	0
Leaf blast	mean	0.0	0.0	0.0	0.0	0.0	0.0	0.0	0.0	0.0	0.0	0.0	0.0
	median	0.0	0.0	0.0	0.0	0.0	0.0	0.0	0.0	0.0	0.0	0.0	0.0
	maximum	0.0	0.0	0.0	0.0	0.0	0.0	0.0	0.1	0.4	0.0	0.0	0.0
	no. of fields	0	0	0	0	0	0	3	9	11	0	0	0
Red stripe	mean	0.0	0.0	0.0	0.0	0.0	0.0	0.0	0.0	0.0	0.0	0.0	0.0
	median	0.0	0.0	0.0	0.0	0.0	0.0	0.0	0.0	0.0	0.0	0.0	0.0
	maximum	0.0	0.0	0.0	0.0	0.0	0.0	0.0	0.0	0.0	0.0	0.0	0.0
	no. of fields	0	0	0	0	0	0	3	9	11	0	0	0
<b>B. DISEASE OR PEST INJURY ON TILLERS</b>													
Deadheart	mean	0.0	0.0	0.0	0.0	0.0	0.0	0.0	0.0	0.2	0.0	0.0	0.0
	median	0.0	0.0	0.0	0.0	0.0	0.0	0.0	0.0	0.0	0.0	0.0	0.0
	maximum	0.0	0.0	0.0	0.0	0.0	0.0	0.0	0.0	1.7	0.0	0.0	0.0
	no. of fields	0	0	0	0	0	0	3	9	11	0	0	0
Sheath blight	mean	0.0	0.0	0.0	0.0	0.0	0.0	0.0	0.0	0.6	0.0	0.0	0.0
	median	0.0	0.0	0.0	0.0	0.0	0.0	0.0	0.0	0.0	0.0	0.0	0.0
	maximum	0.0	0.0	0.0	0.0	0.0	0.0	0.0	0.0	6.3	0.0	0.0	0.0
	no. of fields	0	0	0	0	0	0	3	9	11	0	0	0
<b>LEGEND</b>													
<b>Blue font</b>	5 to 10 % incidence of diseases, insect pest injuries or weed cover or 5 to 10 insects.												
<b>Red font</b>	> 10 % incidence of diseases, insect pest injuries or weed cover or > 10 insects.												

Disclaimer: All the data presented in this report are based on the monthly monitoring of farmers' fields by regional data collectors of PRIME.

## Annex 5. Incidence of diseases or pest injuries during the previous 1st semesters.

CALABARZON		2019						2020					
Laguna		JAN	FEB	MAR	APR	MAY	JUN	JAN	FEB	MAR	APR	MAY	JUN
<b>C. DISEASE OR PEST INJURY ON PANICLES</b>													
Neck blast	mean	0.0	0.0	0.0	0.0	0.0	0.0	0.0	0.0	0.0	0.0	0.0	0.0
	median	0.0	0.0	0.0	0.0	0.0	0.0	0.0	0.0	0.0	0.0	0.0	0.0
	maximum	0.0	0.0	0.0	0.0	0.0	0.0	0.0	0.0	0.0	0.0	0.0	0.0
	no. of fields	0	0	0	0	0	0	0	0	3	0	0	0
Whitehead	mean	0.0	0.0	0.0	0.0	0.0	0.0	0.0	0.0	2.9	0.0	0.0	0.0
	median	0.0	0.0	0.0	0.0	0.0	0.0	0.0	0.0	3.4	0.0	0.0	0.0
	maximum	0.0	0.0	0.0	0.0	0.0	0.0	0.0	0.0	3.8	0.0	0.0	0.0
	no. of fields	0	0	0	0	0	0	0	0	3	0	0	0
<b>D. SYSTEMIC DISEASE OR PEST INJURY</b>													
Bugburn	mean	0.0	0.0	0.0	0.0	0.0	0.0	0.0	0.0	0.0	0.0	0.0	0.0
	median	0.0	0.0	0.0	0.0	0.0	0.0	0.0	0.0	0.0	0.0	0.0	0.0
	maximum	0.0	0.0	0.0	0.0	0.0	0.0	0.0	0.0	0.0	0.0	0.0	0.0
	no. of fields	0	0	0	0	0	0	3	9	11	0	0	0
Hopperburn	mean	0.0	0.0	0.0	0.0	0.0	0.0	0.0	0.0	0.0	0.0	0.0	0.0
	median	0.0	0.0	0.0	0.0	0.0	0.0	0.0	0.0	0.0	0.0	0.0	0.0
	maximum	0.0	0.0	0.0	0.0	0.0	0.0	0.0	0.0	0.0	0.0	0.0	0.0
	no. of fields	0	0	0	0	0	0	3	9	11	0	0	0
Tungro	mean	0.0	0.0	0.0	0.0	0.0	0.0	0.0	0.0	0.0	0.0	0.0	0.0
	median	0.0	0.0	0.0	0.0	0.0	0.0	0.0	0.0	0.0	0.0	0.0	0.0
	maximum	0.0	0.0	0.0	0.0	0.0	0.0	0.0	0.0	0.0	0.0	0.0	0.0
	no. of fields	0	0	0	0	0	0	3	9	11	0	0	0
<b>LEGEND</b>													
<b>Blue font</b>	5 to 10 % incidence of diseases, insect pest injuries or weed cover or 5 to 10 insects.												
<b>Red font</b>	> 10 % incidence of diseases, insect pest injuries or weed cover or > 10 insects.												

Disclaimer: All the data presented in this report are based on the monthly monitoring of farmers' fields by regional data collectors of PRIME.

## Annex 6. Incidence of pest injuries, count of insect pests, and percentage of weed cover during the previous 1st semesters.

CALABARZON		2019						2020					
Laguna		JAN	FEB	MAR	APR	MAY	JUN	JAN	FEB	MAR	APR	MAY	JUN
<b>E. INSECT COUNT</b>													
Brown planthopper	mean	0.0	0.0	0.0	0.0	0.0	0.0	0.0	0.0	0.0	0.0	0.0	0.0
	median	0.0	0.0	0.0	0.0	0.0	0.0	0.0	0.0	0.0	0.0	0.0	0.0
	maximum	0.0	0.0	0.0	0.0	0.0	0.0	0.0	0.0	0.0	0.0	0.0	0.0
	no. of fields	0	0	0	0	0	0	3	9	11	0	0	0
Green leafhopper	mean	0.0	0.0	0.0	0.0	0.0	0.0	0.0	0.1	0.1	0.0	0.0	0.0
	median	0.0	0.0	0.0	0.0	0.0	0.0	0.0	0.0	0.0	0.0	0.0	0.0
	maximum	0.0	0.0	0.0	0.0	0.0	0.0	0.0	0.4	0.3	0.0	0.0	0.0
	no. of fields	0	0	0	0	0	0	3	9	11	0	0	0
Rice black bug	mean	0.0	0.0	0.0	0.0	0.0	0.0	0.0	0.0	0.0	0.0	0.0	0.0
	median	0.0	0.0	0.0	0.0	0.0	0.0	0.0	0.0	0.0	0.0	0.0	0.0
	maximum	0.0	0.0	0.0	0.0	0.0	0.0	0.0	0.0	0.0	0.0	0.0	0.0
	no. of fields	0	0	0	0	0	0	3	9	11	0	0	0
Rice bug	mean	0.0	0.0	0.0	0.0	0.0	0.0	0.0	0.0	0.0	0.0	0.0	0.0
	median	0.0	0.0	0.0	0.0	0.0	0.0	0.0	0.0	0.0	0.0	0.0	0.0
	maximum	0.0	0.0	0.0	0.0	0.0	0.0	0.0	0.0	0.0	0.0	0.0	0.0
	no. of fields	0	0	0	0	0	0	3	9	11	0	0	0
Rice grain bug	mean	0.0	0.0	0.0	0.0	0.0	0.0	0.0	0.0	0.0	0.0	0.0	0.0
	median	0.0	0.0	0.0	0.0	0.0	0.0	0.0	0.0	0.0	0.0	0.0	0.0
	maximum	0.0	0.0	0.0	0.0	0.0	0.0	0.0	0.0	0.0	0.0	0.0	0.0
	no. of fields	0	0	0	0	0	0	3	9	11	0	0	0
<b>F. RAT INJURY</b>	mean	0.0	0.0	0.0	0.0	0.0	0.0	0.0	0.0	0.0	0.0	0.0	0.0
	median	0.0	0.0	0.0	0.0	0.0	0.0	0.0	0.0	0.0	0.0	0.0	0.0
	maximum	0.0	0.0	0.0	0.0	0.0	0.0	0.0	0.0	0.0	0.0	0.0	0.0
	no. of fields	0	0	0	0	0	0	3	9	11	0	0	0
<b>G. WEED COVER</b>	mean	0.0	0.0	0.0	0.0	0.0	0.0	0.6	1.5	2.4	0.0	0.0	0.0
	median	0.0	0.0	0.0	0.0	0.0	0.0	0.0	0.0	1.7	0.0	0.0	0.0
	maximum	0.0	0.0	0.0	0.0	0.0	0.0	1.7	10.0	10.0	0.0	0.0	0.0
	no. of fields	0	0	0	0	0	0	3	9	11	0	0	0
<b>LEGEND</b>													
<b>Blue font</b>	5 to 10 % incidence of diseases, insect pest injuries or weed cover or 5 to 10 insects.												
<b>Red font</b>	> 10 % incidence of diseases, insect pest injuries or weed cover or > 10 insects.												

Disclaimer: All the data presented in this report are based on the monthly monitoring of farmers' fields by regional data collectors of PRIME.



## Annex 7. Incidence of diseases or pest injuries during the previous 1st semesters.

CALABARZON		2019						2020					
Quezon		JAN	FEB	MAR	APR	MAY	JUN	JAN	FEB	MAR	APR	MAY	JUN
<b>A. FOLIAR DISEASES</b>													
Bacterial leaf blight	mean	0.0	0.1	0.0	0.0	0.0	0.0	0.0	0.0	0.0	0.0	0.0	0.0
	median	0.0	0.0	0.0	0.0	0.0	0.0	0.0	0.0	0.0	0.0	0.0	0.0
	maximum	0.0	1.3	0.0	0.0	0.0	0.0	0.0	0.0	0.4	0.0	0.0	0.0
	no. of fields	16	19	14	11	4	3	4	17	16	0	0	0
Bacterial leaf streak	mean	0.1	0.0	0.0	0.0	0.0	0.0	0.0	0.0	0.0	0.0	0.0	0.0
	median	0.0	0.0	0.0	0.0	0.0	0.0	0.0	0.0	0.0	0.0	0.0	0.0
	maximum	1.2	0.5	0.0	0.0	0.0	0.0	0.0	0.0	0.0	0.0	0.0	0.0
	no. of fields	16	19	14	11	4	3	4	17	16	0	0	0
Brown spot	mean	0.6	3.7	2.9	0.2	0.9	0.6	0.0	0.1	0.4	0.0	0.0	0.0
	median	0.0	0.0	0.0	0.0	0.0	0.7	0.0	0.0	0.0	0.0	0.0	0.0
	maximum	5.4	38.8	20.0	0.7	3.5	1.2	0.0	1.2	7.0	0.0	0.0	0.0
	no. of fields	16	19	14	11	4	3	4	17	16	0	0	0
Leaf blast	mean	0.2	0.0	0.0	0.0	0.0	0.0	0.0	0.0	0.0	0.0	0.0	0.0
	median	0.0	0.0	0.0	0.0	0.0	0.0	0.0	0.0	0.0	0.0	0.0	0.0
	maximum	3.1	0.0	0.0	0.2	0.0	0.0	0.0	0.0	0.0	0.0	0.0	0.0
	no. of fields	16	19	14	11	4	3	4	17	16	0	0	0
Red stripe	mean	0.0	0.0	0.0	0.0	0.0	0.2	0.0	0.0	0.0	0.0	0.0	0.0
	median	0.0	0.0	0.0	0.0	0.0	0.2	0.0	0.0	0.0	0.0	0.0	0.0
	maximum	0.0	0.0	0.0	0.0	0.0	0.3	0.0	0.0	0.0	0.0	0.0	0.0
	no. of fields	16	19	14	11	4	3	4	17	16	0	0	0
<b>B. DISEASE OR PEST INJURY ON TILLERS</b>													
Deadheart	mean	0.4	0.1	2.0	0.0	0.0	0.5	0.0	0.1	0.0	0.0	0.0	0.0
	median	0.0	0.0	0.0	0.0	0.0	0.0	0.0	0.0	0.0	0.0	0.0	0.0
	maximum	3.7	1.1	14.8	0.0	0.0	1.5	0.0	1.6	0.0	0.0	0.0	0.0
	no. of fields	16	19	14	11	4	3	4	17	16	0	0	0
Sheath blight	mean	0.3	0.5	1.8	4.4	0.5	0.5	0.0	0.1	0.1	0.0	0.0	0.0
	median	0.0	0.0	0.0	0.0	0.0	0.0	0.0	0.0	0.0	0.0	0.0	0.0
	maximum	2.5	7.6	12.4	13.8	2.1	1.4	0.0	1.1	1.3	0.0	0.0	0.0
	no. of fields	16	19	14	11	4	3	4	17	16	0	0	0
<b>LEGEND</b>													
<b>Blue font</b>	5 to 10 % incidence of diseases, insect pest injuries or weed cover or 5 to 10 insects.												
<b>Red font</b>	> 10 % incidence of diseases, insect pest injuries or weed cover or > 10 insects.												

Disclaimer: All the data presented in this report are based on the monthly monitoring of farmers' fields by regional data collectors of PRIME.

## Annex 8. Incidence of diseases or pest injuries during the previous 1st semesters.

CALABARZON		2019						2020					
Quezon		JAN	FEB	MAR	APR	MAY	JUN	JAN	FEB	MAR	APR	MAY	JUN
<b>C. DISEASE OR PEST INJURY ON PANICLES</b>													
Neck blast	mean	0.3	0.0	0.0	0.0	0.0	0.0	0.0	0.0	0.0	0.0	0.0	0.0
	median	0.0	0.0	0.0	0.0	0.0	0.0	0.0	0.0	0.0	0.0	0.0	0.0
	maximum	1.0	0.0	0.0	0.0	0.0	0.0	0.0	0.0	0.0	0.0	0.0	0.0
	no. of fields	3	4	5	8	1	2	0	1	2	0	0	0
Whitehead	mean	0.7	1.8	1.5	2.9	16.9	0.0	0.0	6.2	5.0	0.0	0.0	0.0
	median	0.8	0.0	0.0	2.4	16.9	0.0	0.0	6.2	5.0	0.0	0.0	0.0
	maximum	1.3	7.3	5.2	6.9	16.9	0.0	0.0	6.2	10.0	0.0	0.0	0.0
	no. of fields	3	4	5	8	1	2	0	1	2	0	0	0
<b>D. SYSTEMIC DISEASE OR PEST INJURY</b>													
Bugburn	mean	0.0	0.0	0.0	0.0	0.0	0.0	0.0	0.0	0.0	0.0	0.0	0.0
	median	0.0	0.0	0.0	0.0	0.0	0.0	0.0	0.0	0.0	0.0	0.0	0.0
	maximum	0.0	0.0	0.0	0.0	0.0	0.0	0.0	0.0	0.0	0.0	0.0	0.0
	no. of fields	16	19	14	11	4	3	4	17	16	0	0	0
Hopperburn	mean	0.0	0.0	0.0	0.0	0.0	0.0	0.0	0.0	0.0	0.0	0.0	0.0
	median	0.0	0.0	0.0	0.0	0.0	0.0	0.0	0.0	0.0	0.0	0.0	0.0
	maximum	0.0	0.0	0.0	0.0	0.0	0.0	0.0	0.0	0.0	0.0	0.0	0.0
	no. of fields	16	19	14	11	4	3	4	17	16	0	0	0
Tungro	mean	0.0	0.0	0.0	0.0	0.0	0.0	0.3	0.0	0.0	0.0	0.0	0.0
	median	0.0	0.0	0.0	0.0	0.0	0.0	0.0	0.0	0.0	0.0	0.0	0.0
	maximum	0.0	0.0	0.0	0.0	0.0	0.0	1.3	0.0	0.0	0.0	0.0	0.0
	no. of fields	16	19	14	11	4	3	4	17	16	0	0	0
<b>LEGEND</b>													
<b>Blue font</b>	5 to 10 % incidence of diseases, insect pest injuries or weed cover or 5 to 10 insects.												
<b>Red font</b>	> 10 % incidence of diseases, insect pest injuries or weed cover or > 10 insects.												

Disclaimer: All the data presented in this report are based on the monthly monitoring of farmers' fields by regional data collectors of PRIME.

## Annex 9. Incidence of pest injuries, count of insect pests, and percentage of weed cover during the previous 1st semesters.

CALABARZON		2019						2020					
Quezon		JAN	FEB	MAR	APR	MAY	JUN	JAN	FEB	MAR	APR	MAY	JUN
<b>E. INSECT COUNT</b>													
Brown planthopper	mean	0.0	0.0	0.0	0.0	0.0	0.0	0.0	0.0	0.0	0.0	0.0	0.0
	median	0.0	0.0	0.0	0.0	0.0	0.0	0.0	0.0	0.0	0.0	0.0	0.0
	maximum	0.1	0.0	0.0	0.0	0.0	0.0	0.0	0.0	0.0	0.0	0.0	0.0
	no. of fields	16	19	14	11	4	3	4	17	16	0	0	0
Green leafhopper	mean	0.0	0.3	0.1	0.1	0.1	0.0	0.0	0.0	0.0	0.0	0.0	0.0
	median	0.0	0.0	0.0	0.0	0.0	0.0	0.0	0.0	0.0	0.0	0.0	0.0
	maximum	0.0	3.0	0.7	0.3	0.5	0.0	0.0	0.1	0.1	0.0	0.0	0.0
	no. of fields	16	19	14	11	4	3	4	17	16	0	0	0
Rice black bug	mean	0.0	0.0	0.0	0.0	0.0	0.0	0.1	0.0	0.0	0.0	0.0	0.0
	median	0.0	0.0	0.0	0.0	0.0	0.0	0.0	0.0	0.0	0.0	0.0	0.0
	maximum	0.0	0.0	0.0	0.0	0.0	0.0	0.2	0.0	0.0	0.0	0.0	0.0
	no. of fields	16	19	14	11	4	3	4	17	16	0	0	0
Rice bug	mean	0.0	0.0	0.2	0.5	0.9	0.7	0.0	0.0	0.0	0.0	0.0	0.0
	median	0.0	0.0	0.0	0.0	0.0	0.3	0.0	0.0	0.0	0.0	0.0	0.0
	maximum	0.3	0.3	2.0	3.0	3.7	1.7	0.0	0.0	0.0	0.0	0.0	0.0
	no. of fields	16	19	14	11	4	3	4	17	16	0	0	0
Rice grain bug	mean	0.0	0.0	0.0	0.0	0.1	0.0	0.0	0.0	0.0	0.0	0.0	0.0
	median	0.0	0.0	0.0	0.0	0.0	0.0	0.0	0.0	0.0	0.0	0.0	0.0
	maximum	0.0	0.0	0.1	0.1	0.3	0.0	0.0	0.0	0.0	0.0	0.0	0.0
	no. of fields	16	19	14	11	4	3	4	17	16	0	0	0
<b>F. RAT INJURY</b>	mean	0.0	0.1	0.4	0.0	0.3	0.0	0.0	0.0	0.0	0.0	0.0	0.0
	median	0.0	0.0	0.0	0.0	0.0	0.0	0.0	0.0	0.0	0.0	0.0	0.0
	maximum	0.0	1.0	1.0	0.0	1.0	0.0	0.0	0.0	0.0	0.0	0.0	0.0
	no. of fields	16	19	14	11	4	3	4	17	16	0	0	0
<b>G. WEED COVER</b>	mean	2.4	9.3	6.8	4.9	23.3	30.6	2.5	4.6	10.5	0.0	0.0	0.0
	median	0.0	0.0	2.5	3.3	20.8	20.0	2.5	0.0	1.7	0.0	0.0	0.0
	maximum	23.3	68.3	45.0	30.0	48.3	56.7	5.0	45.0	56.7	0.0	0.0	0.0
	no. of fields	16	19	14	11	4	3	4	17	16	0	0	0
<b>LEGEND</b>													
<b>Blue font</b>	5 to 10 % incidence of diseases, insect pest injuries or weed cover or 5 to 10 insects.												
<b>Red font</b>	> 10 % incidence of diseases, insect pest injuries or weed cover or > 10 insects.												

Disclaimer: All the data presented in this report are based on the monthly monitoring of farmers' fields by regional data collectors of PRIME.